

Pinetop-Lakeside
Johnson Drive Improvements
Funded by the Arizona Department of Housing

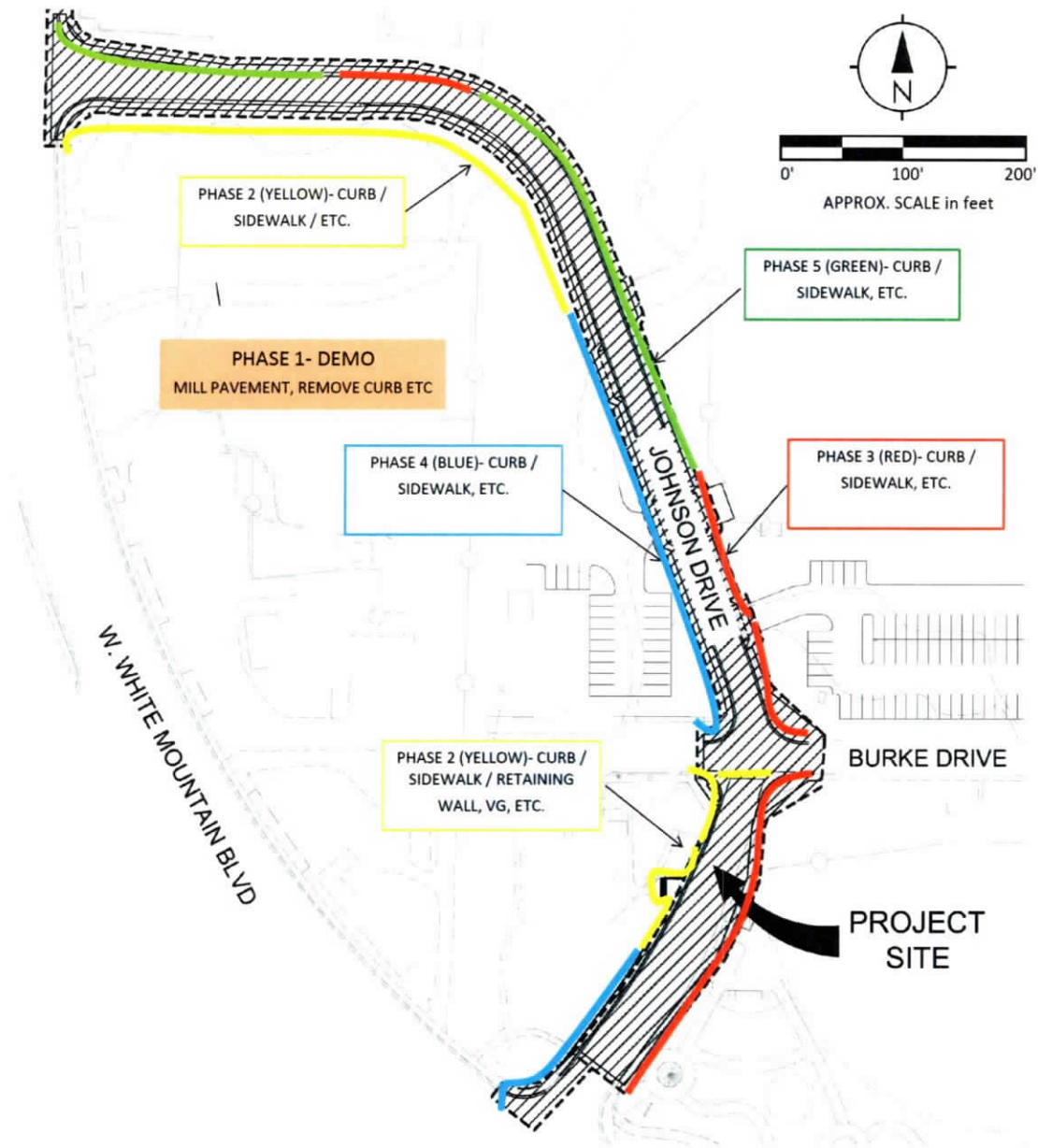
Notice of Road Construction




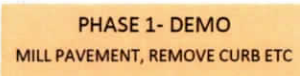




CONSTRUCTION will commence on Johnson Drive in the coming weeks. All businesses will have continual access during the construction process. It is anticipated that the project will be completed in 90 days. This project will have various phases to complete designated sections in an effort to minimize pedestrian and motorist inconvenience. Please reference the project improvement plan, including a preliminary sequence plan on www.pinetoplakesideaz.gov.

The public is asked to slow down, obey all laws and direction indications from both construction signage and construction crews. Anticipate some roadway limitation. Flaggers will be posted at key locations during construction to direct traffic when there is a roadway limitation. It is the law for any driver who sees and hears an emergency vehicle approaching to safely yield the right of way. Please **SLOW DOWN AND BE CONSIDERATE**.

Town Project Manager is the Pinetop-Lakeside Public Works Director. Pinetop-Lakeside Public Works Department and the General Contractors' crews will complete the Johnson Drive Improvements with the least inconvenience as possible to the public and commercial and residential property owners. Weekly updates, if necessary will be posted under NEWS and the PUBLIC WORKS DEPARTMENT Sections of the Town of Pinetop-Lakeside's website: www.pinetoplakesideaz.gov or Pinetop-Lakeside Public Works Department: 958 S. Woodland Road | Pinetop-Lakeside | AZ 85929 | 928-368-8885



LEGEND

-  WORK ZONE
-  PHASE 1 DEMO
-  PHASE 2 CURB/ SIDEWALK ETC.
-  PHASE 3 CURB /SIDEWALK ETC
-  PHASE 4 CURB/ SIDEWALK ETC
-  PHASE 5 CURB/ SIDEWALK ETC

SEQUENCE PLAN EXHIBIT

PRELIMINARY SEQUENCE PLAN
 JOHNSON DRIVE IMPROVEMENT PROJECT NO. PW 19-004
 TOWN OF PINETOP-LAKESIDE, AZ / PREPARED BY: DEVELOPMENT SPECIALISTS / JUNE 14, 2019

